

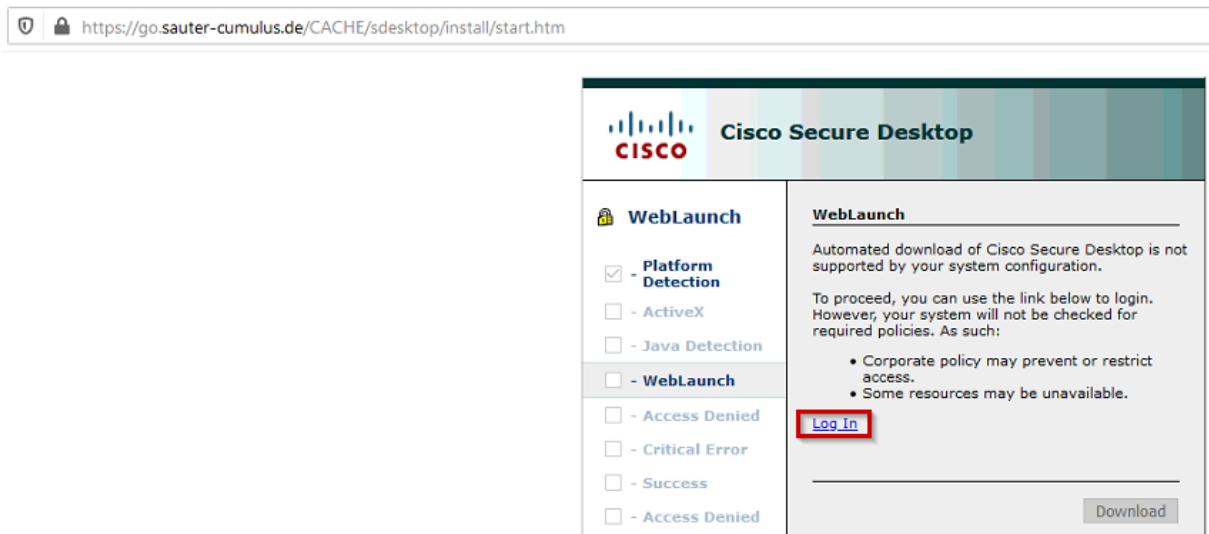
VPN-Zugang per Cisco AnyConnect

Hinweis:

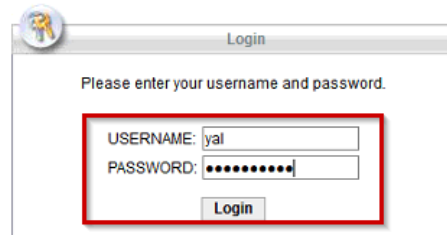
Die VPN-Verbindung und der Download funktioniert nur außerhalb des SauterNetzwerks! VPN-Benutzer muss zuvor von der EDV eingetragen worden sein.

AnyConnect herunterladen

<https://go.sauter-cumulus.de>



VPN Service



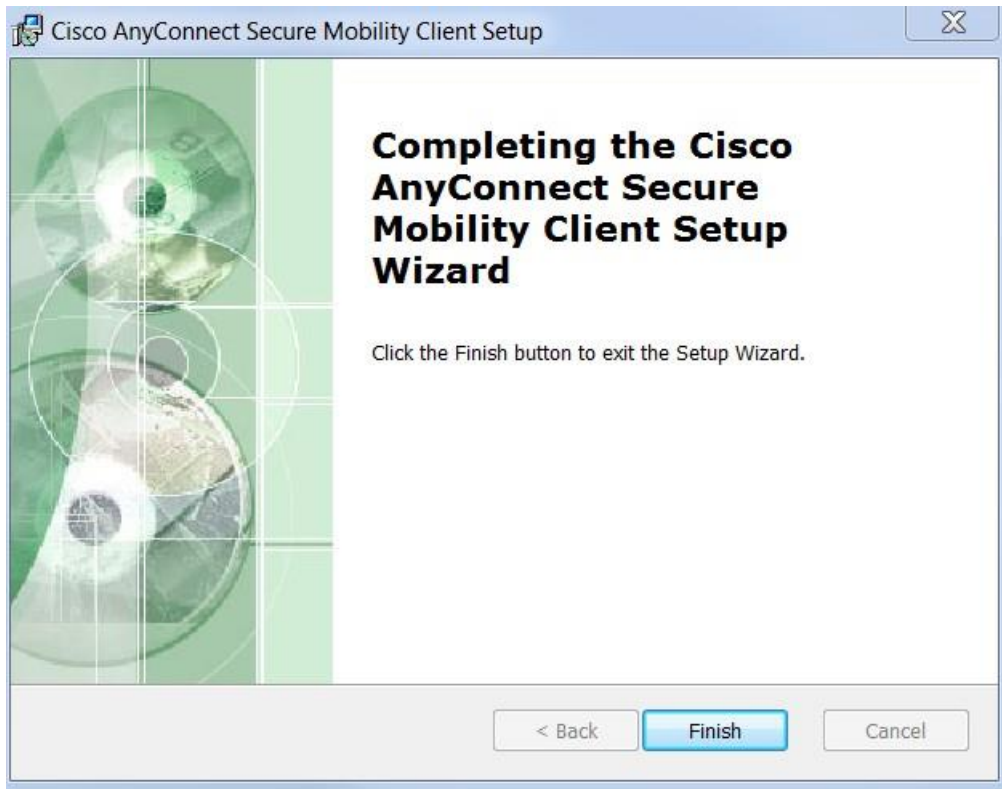
A small dialog box titled "Login" with a user icon in the top-left corner. The text inside says "Please enter your username and password." Below this, there are two input fields: "USERNAME: yal" and "PASSWORD: ●●●●●●●●". A "Login" button is located at the bottom right of the input area.



The Cisco AnyConnect Secure Mobility Client WebLaunch interface. The top bar is blue with the Cisco logo and the text "AnyConnect Secure Mobility Client". On the left, under "WebLaunch", there are several checkboxes: "Platform Detection" (checked), "- ActiveX" (unchecked), "- Java Detection" (checked), "- Java" (unchecked), "- Download" (unchecked), and "- Connected" (unchecked). On the right, under "Manual Installation", there is text explaining that web-based installation was unsuccessful and providing instructions for manual installation. It includes a link for "AnyConnect VPN" and a "retry" link. At the bottom, there are "Help" and "Download" buttons.

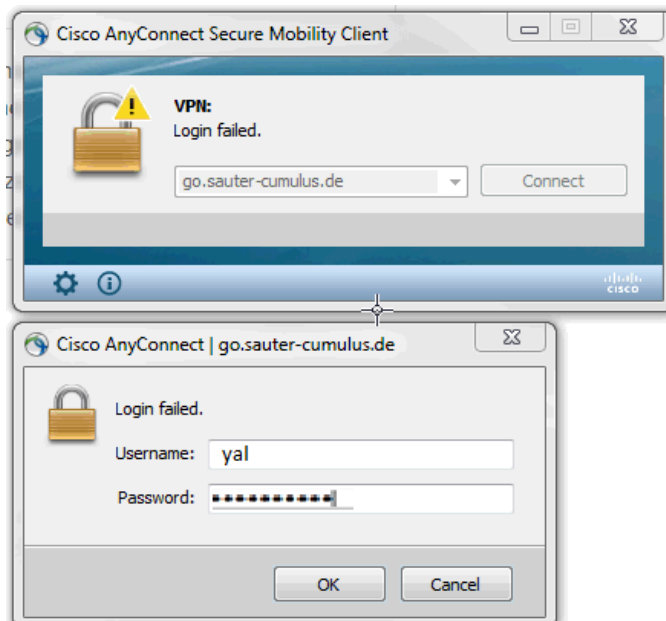


The Cisco AnyConnect Secure Mobility Client WebLaunch interface with a file download dialog box overlaid. The dialog box is titled "Öffnen von anyconnect-win-4.5.01044-core-vpn-webdeploy-k9.exe" and contains the following text: "Sie möchten folgende Datei öffnen:", "anyconnect-win-4.5.01044-core-vpn-webdeploy-k9.exe", "Vom Typ: Binary File (5.3 MB)", "Von: https://go.sauter-bc.com", and "Möchten Sie diese Datei speichern?". There are "Datei speichern" and "Abbrechen" buttons at the bottom of the dialog. The background shows the same WebLaunch interface as in the previous image.



1. Mit dem VPN verbinden

Login mit username (Kurzzeichen / OES Netzwerkanmeldung) und Passwort, Knopf „OK“ drücken, danach sollte eine Meldung „successfully connected“ und ein gelbes Schloss beim AnyConnect-Symbol erscheinen



Einstellungen

Sofern von einem privaten Netzwerk (bspw. von zuhause) innerhalb der VPN-Verbindung gedruckt werden soll, muss der Haken unter „Preferences“, „Allow local (LAN) access when using VPN (if configured)“ gesetzt werden.

